

SWAN

WATER SOFTENERS



PURITY, SIMPLICITY, SERENITY

Stylish, and exclusive

Advanced, efficient and quiet

Large for the larger house, office or pub

Efficient, very low regeneration water usage



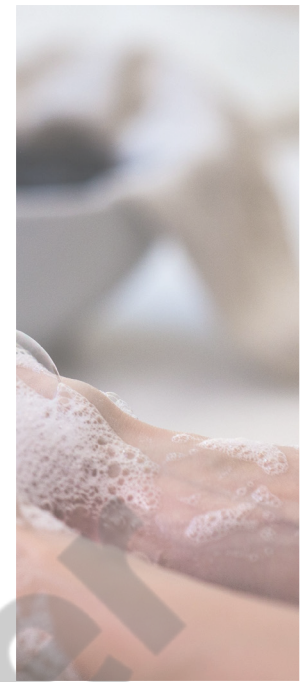
A SWAN WATER SOFTENER IS...

These are larger water softeners ideal for B&B's, pubs and offices. They contain up to 35 litres of resin giving 5800 litres of softened water between regenerations (based on 300 mg/l hardness(UK average)).

Swan softeners are housed in a white cabinet with a blue hood. The Swan range has a robust cabinet handling the roughest treatment.

Water is essential for life. That's why an efficient water treatment cannot be underestimated for the comfort of you and your family. Installing a water softener has a major impact in:

- Reducing your heating costs maintaining the efficiency of water heating appliances.
- Saving in maintenance and repair costs associated with lime-scale build up in water heating equipment, washing machines and shower heads.
- Decreasing the amount of soap, detergent, shampoo and cleaning products required.
- Easier cleaning of surfaces/shower cubicles
- Gives your skin a silky clean feeling.



Height 1190mm
Width 325mm
Depth 520mm

Technical Data

Width	325mm			
Height	1190mm			
Depth	520mm			
Capacity	18L	25L	30L	35L
Litres of water between regens (at 300ppm)	3000L	4166L	5000L	5800L
Inlet/Outlet	3/4" or 1"			
Power	240V			

Invest in a water softener and save money for years

Call your local dealer for a quotation now